

Because life is

Petty<sup>TM</sup>  
Real

15 Towler Drive  
Colne  
BB8 7GN



## For Sale

- Built by prestigious local developer Beck Homes just over 5 years ago
- Modern four-bedroom detached family home
- Spacious and well-presented lounge ideal for entertaining
- Contemporary dining kitchen with integrated Siemens appliances
- Open-plan dining area with French doors to the rear garden

## Offers Over £400,000

- Landscaped, low-maintenance garden with views towards Boulsworth
- Attractive summer house perfect for relaxing or entertaining
- Potential to create a garden room or home office (STPP)
- Four bedrooms, including master with en suite
- Sought-after location close to schools, amenities, and transport links



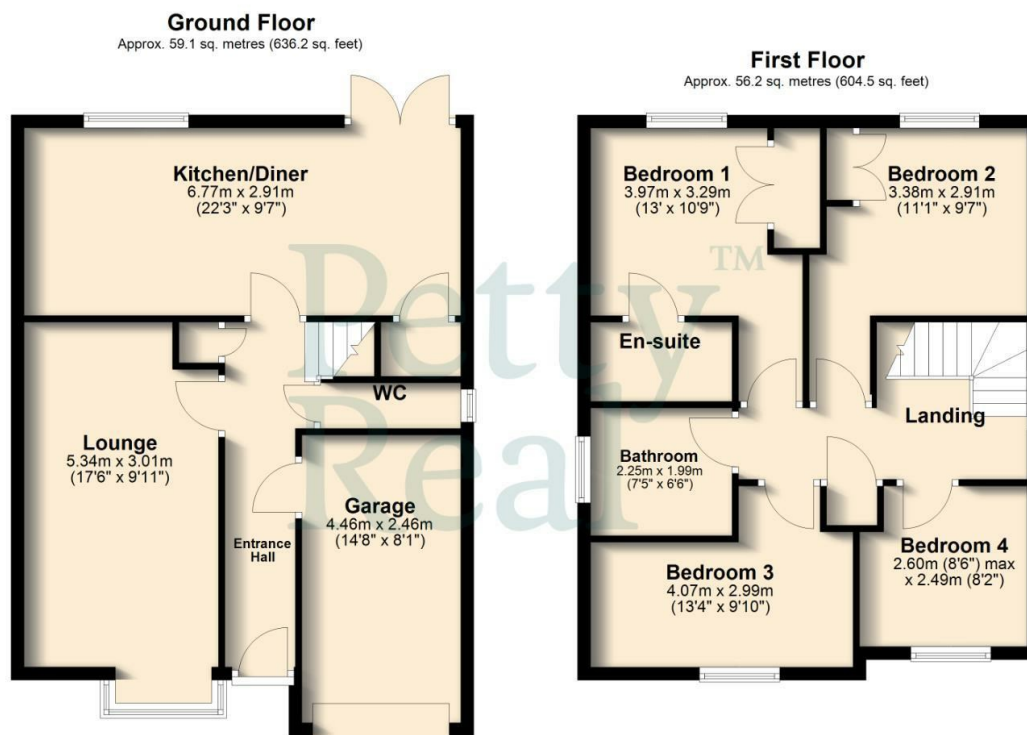
Constructed by the prestigious local builder Beck Homes just over five years ago, this exceptional four-bedroom detached residence on Towler Drive, Colne offers stylish, modern living with high-quality finishes throughout—ideal for growing families seeking both comfort and convenience.

Upon entering, you are greeted by a welcoming hallway that leads into a spacious and elegantly presented lounge, providing the perfect setting for relaxing evenings or entertaining guests. To the rear, the heart of the home is undoubtedly the contemporary dining kitchen, beautifully appointed with a range of sleek units and integrated Siemens appliances. This impressive space flows seamlessly into a designated dining area, creating a sociable and functional environment for everyday living.

French doors open directly onto a beautifully landscaped rear garden, designed for low maintenance while still offering an attractive outdoor space. The garden enjoys pleasant open aspects with views towards Boulsworth, creating a lovely backdrop. A charming summer house provides an ideal spot for relaxing or entertaining, while the generous plot also offers excellent potential to create a garden room or home office, subject to any necessary permissions.

To the first floor, the property boasts four well-proportioned double bedrooms. The master bedroom benefits from a stylish en suite shower room, offering a peaceful retreat, while the remaining bedrooms are served by a modern three-piece family bathroom finished to a high standard.

Situated in a highly desirable residential development, the property is conveniently located close to well-regarded local schools, amenities, and transport links. Combining a quality build, contemporary design, and an enviable position with far-reaching views, this superb home presents an outstanding opportunity for buyers looking to settle in one of Colne's most sought-after areas.



Total area: approx. 115.3 sq. metres (1240.7 sq. feet)

All floorplans provided are for guidance only. Please check all dimensions before making any decisions reliant upon them.  
Plan produced using PlanUp.



These particulars, whilst believed to be accurate are set out as a general outline only for guidance and do not constitute any part of an offer or contract. Intending purchasers should not rely on them as statements of representation of fact, but must satisfy themselves by inspection or otherwise as to their accuracy. No person in this firm's employment has the authority to make or give any representation or warranty in respect of the property.

11 Albert Road, Colne, Lancashire, BB8 0RY  
T. 01282 868686  
Colne.sales@pettyreal.co.uk

[www.pettyreal.co.uk](http://www.pettyreal.co.uk)